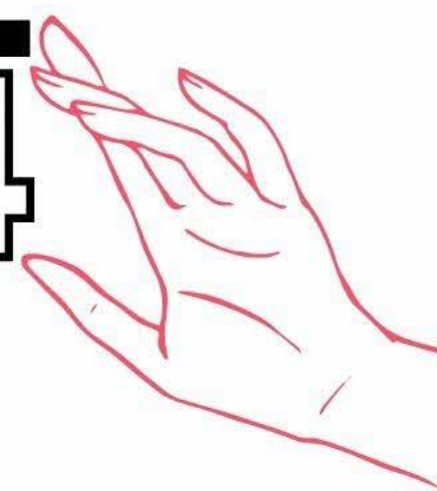
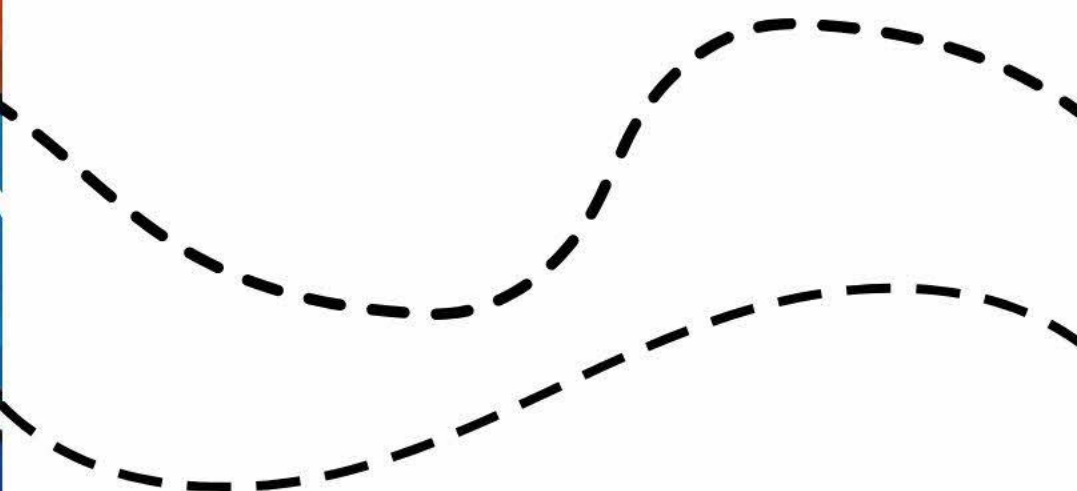


SOCIAL SERVICE CONNECT 2024



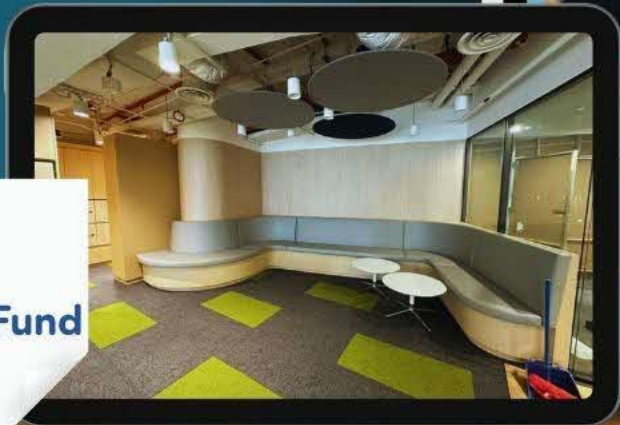
Welcome Address

Ms Tan Li San, CEO, NCSS



DRIVING GREATER COLLABORATION IN SERVICE DELIVERY TO TACKLE COMPLEX CHALLENGES

 **NCSS 4ST
Partnership Fund**



Interagency Taskforce
on Mental Health and
Well-being

Integrated services for
groups in need

MOVING FORWARD

Closer collaboration with
MSF on master planning
and strengthening service
delivery of key services

SSA-FIRST APPROACH TO DEVELOPING SECTOR CAPABILITY



Transformation Sustainability Scheme

Competency-based talent development

Social Services Digitalisation Playbook

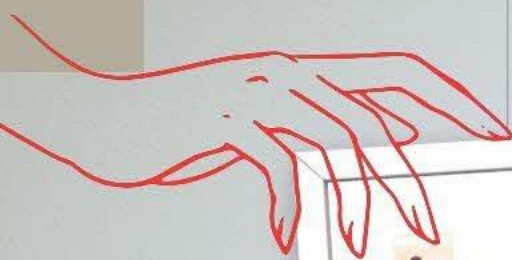
● NEW

DIRECTING CORPORATE & COMMUNITY RESOURCES FOR GREATER IMPACT



- Sustainable Philanthropy Framework
- Project V
- Supporting resources for SSAs





SUPPORTING THE SECTOR WITH DATA, RESEARCH & EVALUATION TOOLS



Sector Evaluation Framework resources

Annual nationwide Quality of Life surveys and report

New “Insights to Impact” seminar series

STRENGTHENING INTERNAL CAPABILITIES TO DRIVE SECTOR TRANSFORMATION



Launch of Agency
Information
Management
System (AIMS)



Enhance data skills
for better insights
and decision-
making



Build futures
capability for long-
term strategic
planning

NCSS AS SECTOR DEVELOPER



Work with
larger
ecosystem



Drive greater
sector
collaboration



Retain
membership





**TO SHARPEN
FOCUS ON OUR
ROLE AS SECTOR
DEVELOPER**

**REVIEW
NCSS
ACT**

**REFRESH
BRAND
ARCHITECTURE**

KEEPING OUR DNA



A culture of possibility, a culture of ability, a culture of potential capacities that you can make... To me, it is very important to build this culture and organisational behaviour that is proactive, not reactive.

Dr S Vasoo

NCSS oral history interview, May 2023





Social Service
Connect 2024

THANK
YOU

